

Booking Form - One church, 100 uses

Please note

Cancellations, which must be made in writing, will be subject to an administrative charge of £50 until 15 working days before the conference, after which no refunds can be made.

Delegates are able to nominate substitutes.

If payment is not received by the conference date, we reserve the right to make an additional administration charge of £50 per delegate.

Return to or for more information contact:

John Macaulay
Bearhunt
Six Kingsbury House
St Hilary's Park
Alderley Edge
Cheshire SK9 7DA
Tel: 01625 584448
email: j.macaulay@bearhunt.org.uk
web: www.bearhunt.org.uk

Payment information

Number of delegates attending @ £99

£ Total

please find a cheque attached for made payable to "bearhunt ltd" Or

£

please invoice my organisation at:

BACs details are as follows:

Name of account: Bearhunt Sympo Ltd
Account no.: 74674132
Sort code: 09-01-27
Bank name: Santander
Bank address: PO Box 10102, 21 Prescott Street, London E1 8TN

Personal information

Full Name:

Job Title:

Organisation:

Address:

Postcode:

Tel:

Fax:

Email:

Special dietary requirements:

Other special requirements:

If this is a block booking, list names of other delegates and job titles

1

2

3

4

5

☐ If you do not wish to receive information from One church, 100 uses please tick here



One church, 100 uses

what to expect and when

9.30 Welcome to a world of opportunity
The sticky ball principle and the power of connection - Lord Mawson

9.40 The Church's role in the Big Society - an eminent speaker from the Government

10.00 The experience of Salford - reinventing communities - Rt Hon Hazel Blears MP

10.20 First road test session (1 hour)

11.20 Coffee

11.35 Secrets in the stones - Mel Bonney-Kane, followed by
Living, breathing, heritage spaces - Baroness Andrews

12.30 Lunch and round table discussions (Workshop presenters will each have a table where people can take lunch and discuss issues)

1.30 Big opportunities for a Big Society - Peter Wanless

2.30 Case Studies: Thou shall have a fishy on a little dishy - Colin Gregg, and;
Artarena and The Roland Collection - Anthony Rowland
1 church, 100 uses - Donald Findley and Peter Southcombe

3.30 Tea

3.15 Second road test session (1 hour)

4.15 Unlimited potential – backing people with passion - Cliff Prior,
including result of the 20:20 event

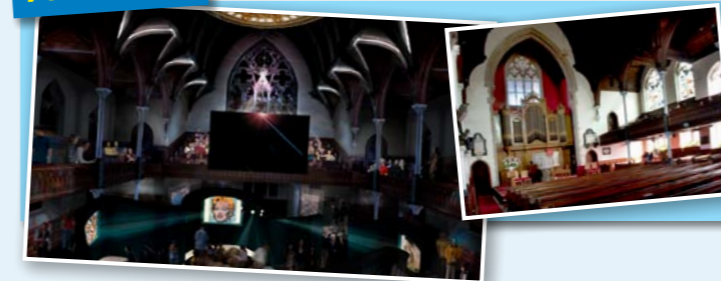
4.45 Closing remarks - Lord Mawson

5.00 Close

The Big Sing

Knowing that the church has always been partial to a bit of singing we will be doing some during the course of the day. Join our local choir for The Big Sing.

Artarena



Experience the effect of Anthony Roland's Artarena, as we bring you an interactive installation to give you a flavour of the Artarena church project.

Changes may be made to the programme without noticed. For the latest information go to: www.bearhunt.org.uk/conferences-and-events.html

SPONSORED BY:

The Methodist Church



SUPPORTERS:

ENGLISH HERITAGE

UnLtd

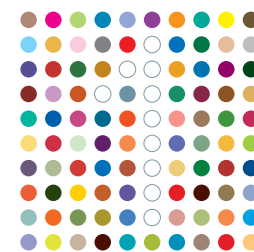
heritage lottery fund



ATTENDEES WILL GET THE CHANCE TO WIN £5,000 FOR THEIR CHURCH IDEA

One church 100 uses

Don't miss this opportunity to see award winning
The Monastery, Manchester.



One church, 100 uses

www.bearhunt.org.uk

One church, 100 uses

The UK is sitting upon an amazing yet underused asset base. We walk past it every day, often without so much as a second glance, yet all around us are church buildings with the potential to be much more than they are.

In the United Kingdom alone there are some 50,000 church buildings ranging from vibrant, to underused to redundant. Some date back to the 1600s, though many were built by enterprising Victorians with an eye for a good location. These buildings have been at the heart of Big Society for hundreds of years.

Yet times have changed and communities have changed. Churches must change too. There is no future in holding on to a nostalgic image of a glorious past.

Around the UK there are enterprising models springing up. These offer a glimpse of the amazing potential for church buildings to engage with the 21st Century and become vibrant hubs in the heart of our communities - hubs for all kinds of things - enterprise, arts, health, childcare, education, public services, sport, youth and other things that perhaps have not been thought of yet.

In a new era of the Big Society, it is time to revitalise our church buildings. We have a once in a lifetime opportunity to bring our golden legacy of location and heritage to meet the opportunities presented by a new era.

This not to be missed **Sympo event** is about creating the momentum to go forward and make it happen. During the day you will: -

- Interact, learn and experience in a space which informs entertains and creates a desire to take self-propelled action
- Be exposed to inspiring case studies showing the possibilities for churches
- Meet a wide range of professionals from all sectors to explore and develop the concept of One church, 100 uses
- Enjoy opportunities to share and connect
- Get guidance on how to overcome possible obstacles
- Find out how to support collective and individual action

With the Big Society Bank opening for business in 2011, now is the time to create bold, ambitious visions for connecting churches, buildings and people in ever more creative, ever more valuable ways.

Manchester's magnificent **Monastery** is Pugin's architectural masterpiece. It sits alongside the Taj Mahal and the ancient ruins of Pompeii as having been listed in the 100 most endangered sites in the world.



One church,
100 uses

People bringing IDEAS

Living, breathing, heritage spaces

Baroness Andrews, Chair, English Heritage

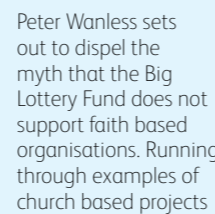


English Heritage has spent over £1 billion the past decade to help to preserve some of our most precious heritage buildings. Yet it is more than a simple preservation society. It wants to

support living, breathing heritage spaces. Here Baroness Andrews outlines some of the successes and talks about the role of English Heritage in helping us to move towards the notion of One church, 100 uses.

Big opportunities for a Big Society

Peter Wanless, Chief Executive, Big Lottery Fund.



Peter Wanless sets out to dispel the myth that the Big Lottery Fund does not support faith based organisations. Running through examples of church based projects supported by a wide range of funding streams he shows how projects have accessed funds by thinking creatively. With between £500 and £600 million available for future programmes, the message is that just because a funding stream doesn't have 'church' in the title doesn't mean it's not for you.

Reinventing communities

Rt Hon Hazel Blears MP

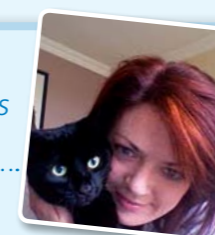


Rt Hon Hazel Blears MP will share her vision for reinventing communities, and the important role church buildings can play using her experience of Salford.

connection to Britain's first ever shopping mall. It sits in a magnificent position carved into the cliff face overlooking the sea. Built by entrepreneurs, it was a place to live, to take leisure and to worship - all with a sustainable business plan. In recent years it has suffered neglect yet is about to begin a new phase as a world class centre for young people with a £4.2 million grant from the Government's myplace programme.

Secrets in the stones

Mel Bonney-Kane, Project Director, Hastings Youth Hub



Road test your church

Who's got the money and how do we get it?

Malcolm McClean, Bearhunt

With The Big Society Bank opening for business in 2011 and The Heritage Lottery Fund receiving a boost to its funding, perhaps there was never a better time to aspire to transform church buildings. Yet getting hold of the money is never easy, and the competition just gets tougher and tougher. Malcolm McClean sets out a routemap of sources of money, explains the power of stories in creating winning bids and exposes common pitfalls in business planning.



There's no business like social business

Cliff Mills, Associate, Cobbetts LLP



Opening up a church to a myriad of uses is not something that you can do in your lunch hour. It's a serious business undertaking, and one which can deliver social benefit. As always, the legal implications can be a minefield. They need not be, if they are thought about sooner rather than later. Here Cliff Mills talks about the legal implications and gives a guide to the emerging new organisational structures available to social businesses.

Road-test your church use idea

in 20 by 20 format

20 by 20 is a format developed by Japanese designers as a way of giving information quickly and entertainingly as well as providing the catalyst for conversation. Each presenter is allowed to present 20 images and may speak for 20 seconds about each image. This is a fantastic opportunity for individuals who have an idea which will change society for the better, utilize a church building, and want help getting it off the ground.

Our expert panel will provide advice to all entrants and the individuals with the best ideas could walk away with up to £5000 in funding plus further support from Unltd, a charity that backs social entrepreneurs.

We are looking for entries from people with a passion for church buildings from across the UK.

To learn more or to enter, email j.macauley@bearhunt.org.uk

How to access funding

Sara Hilton, Head of Heritage Lottery Fund North West



Using money raised through the National Lottery, The Heritage Lottery fund provide grants to projects that sustain and transform a wide range of heritage for present and future generations to take part in, learn from and enjoy. Sara Hilton will communicate the Heritage Lottery Fund strategy for supporting projects that conserve, sustain and share heritage. Since 1994 HLF has supported more than 33,900 projects, allocating £4.4 billion across the UK.

Youth Achievement Foundations - an opportunity for those on the margins?

Stephen Turner, Programme Director, YAFs, UK Youth

In a typical year 340,000 pupils will be excluded from school, 8,000 of them permanently. Youth Achievement Foundations (YAFs) recognise that mainstream education does not work for a small but significant number of young people, and provide an alternative which is proving incredibly successful. Now YAFs are franchised social businesses which contract with Local Authorities. Funding is being sought to create new YAFs by way of soft loans in the early years before surpluses are made. Excluded young people are on the margins of society - the very people who should benefit from the reinvention of church buildings.

The Road Test is your opportunity to speak to people with a wide range of expertise including; heritage architects, specialist lawyers, conservation/energy/environment experts and many more

The sticky ball principle and the power of connection

Lord Mawson of Bromley-by-Bow, Independent Cross Bench Peer

How do you take a church with a leaking roof, £400 in the bank and a handful of elderly parishioners and make it into a world class hub for a community? You would need to ask an irreverent reverend. Lord Andrew Mawson faced exactly this dilemma when he took on his first parish in the East End of London. Today The Bromley-by-Bow Centre as it is now known has its own health centre, nursery, park, café and houses a string of social businesses. It employs over 150 local people local people and turns over in excess of £4 million which gets spent in the local community. It all happened because of a sticky ball....

Thou shall have a fishy on a little dishy

Colin Gregg, Trinity Church, Gosforth

How on earth could a fish restaurant like Loch Fine have anything to do with a church? Go to Gosforth in the North East of England and you can find out. It's part of a high street development in which three church buildings were transformed and in turn transformed the centre of gravity of the whole high street. It's not quite the feeding of the five thousand, but it is an amazing story involving fish, people, the church and an incredible transformation.

Unlimited potential - backing people with passion

Cliff Prior, Chief Executive, Unltd



Unltd is a fund which emerged out of the Millennium Endowment. Its mission is to reach out and unleash the energies of those who can change the world in which they live. Each year it backs people who have ideas for developing social enterprises by offering support, guidance, mentoring and real financial support.

Cliff Prior explains the progress made since Unltd was established, talks about what makes a great social entrepreneur and explains how you can benefit from the support and resources of Unltd.

Artarena and The Roland Collection

Anthony Roland, Curator, The Roland Collection



The Roland Collection is the world's largest compilation of films on art and has been searching for a home to display its vast resources. Meanwhile the congregation of West Park URC is looking to sell its church to fund a new build much more appropriate to its needs.

Anthony Roland describes a radical plan to bring The Roland Collection to Sunderland, transform the church into a breathtaking Art Arena and create a destination attraction which will bring jobs and money into the local economy.